



2725 Prairie Street SW  
Wyoming, Michigan 49519  
(616) 248-7800  
[www.vikingspas.com](http://www.vikingspas.com)  
[info@vikingspas.com](mailto:info@vikingspas.com)

©2024 Rev. C. Viking Spas provides product information, including technical information and specifications for the customer's convenience in the selection of products and options. The accuracy or completeness of this product information is not guaranteed and is subject to change without notice. The Bluetooth® word mark and logos are registered trademarks owned by Bluetooth SIG, Inc. Air X® is a registered trademark of Custom Molded Products, LLC. ControlMySpa™ and SpaTouch™ are trademarks of Balboa Water Group.



# Live Better, Naturally

Life presents us with a variety of challenges, from muscle stiffness and joint discomfort to the hustle and bustle of daily life. While traditional treatments like medication and physical therapy are effective solutions, there are also simple, natural methods that can boost your well-being.

For centuries, people have celebrated the soothing properties of warm water to ease aches, pains, and stress. From the luxurious baths of ancient Rome to today's inviting hot tubs, immersing ourselves in warm water can lead to remarkable physical and mental rejuvenation.

If you are seeking a gentle, natural remedy to alleviate discomfort or to unwind after a hectic day, consider the profound effects that a warm soak can have on your overall health and your ability to live better, naturally.





# Remarkable Benefits

Experience relief from life's everyday aches, pains, and stresses with the natural healing power of hot water. Whether it's muscle stiffness, arthritis, or simply the stress of work and family life, these issues can take their toll on both our bodies and our minds. Discover more about the remarkable benefits of a warm soak for your health and well-being.

## Hydrotherapy

Hydrotherapy, or the therapeutic use of water, has been refined over centuries, drawing from ancient civilizations. In today's hot tubs, strategically placed spa jets stimulate blood circulation, promote muscle recovery, and reduce anxiety.

## Start sleeping well, tonight

Struggling to sleep? A hot tub can help. Its hydrotherapeutic properties reduce stress and relax muscles, making it easier to fall asleep and stay asleep longer.

## Same stress, new relief

Hot water has been used for centuries to relieve stress by improving circulation, calming the nervous system, and alleviating pain. Immersion in hot water releases endorphins, increases blood flow, and provides therapeutic benefits.

## Quality family time

Quality family time can be hard to come by. A quick dip in a hot tub provides an opportunity to unplug from distractions and strengthen connections. Experiencing the health benefits together fosters stronger, more balanced relationships.

## Relief from arthritis pain

Hot tubs offer relief from arthritis through hot water therapy, alleviating stiffness and providing immediate pain relief. Regular spa usage can reduce joint inflammation and improve muscle elasticity, managing arthritis symptoms proactively.





# The Viking Difference

Family-owned and American-built, high-quality materials and superior components are the cornerstone of every Viking hot tub. Each spa is meticulously crafted with careful workmanship and an unwavering attention to detail, ensuring that every aspect of the hot tub is designed to last for years to come.

## Energy efficient

The hot tub industry follows the energy standards set by the California Energy Commission (CEC) for all portable spas. Viking Spas makes sure that all its hot tubs meet or exceed these standards with its Arctic insulation. This insulation includes a 2lb polyurethane foam sprayed onto the underside of the shell, followed by the installation of foam boards and a temperature shield material attached to the backside of the cabinet panels.

## Performance

The Viking Spas Hydraulic System (VSHS) is comprised of industry leading components that have been designed specifically for each model to provide optimum jet performance and water filtration.



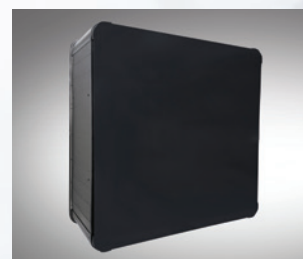
### Custom fit cover

Each Viking hot tub comes with a custom fit cover made of high R-value foam and weather-resistant fabric to keep water hot and prevent debris from getting in.



### High-quality components

All hot tubs are built with high-quality components. Each model has a durable bottom made of HDPE plastic to protect your hot tub and ensure longevity.





# Revitalize and Renew

Hydrotherapy is essential to the hot tub experience. Powerful jets release a combination of water and air, creating a soothing and invigorating massage. These jets come in different sizes and feature directional and rotating nozzles, allowing for precise and customizable relief to specific areas of the body.



**1** Our swing seat is designed with versatility in mind. You can adjust your seating position to personalize your massage, engage in conversations, and enjoy breathtaking views of the sunrise or sunset, all from the same seat.



**2** The Elite series pillow has a dynamic design that lets you easily adjust the height of the pillow for unparalleled comfort and tailored support. The hollow structure ensures a plush, cushioned feel.



**3** Air X® jets utilize more air and less water to provide a “lighter touch” massage in select seats. Visit your local Viking Spas dealer for more information about this optional feature.



**4** Easily rotate the face of a jet to turn it off or on. Turning off a jet(s) increases flow to other jets allowing you to target specific areas or simply enjoy a seat with no jet action.



**5** Use the air valves to customize your massage by decreasing or turning off the amount of air mixing with water coming from the jets.

**6** Available on select models, the diverter valve redirects the water flow between groups of jets or share the water flow between more jets for all to enjoy.

**7** Whether you need a low back, full back, foot, or neck massage you’ll find targeted massage points throughout every Viking hot tub.





# Feel the Difference

Attention to detail makes all the difference. Viking hot tubs are equipped with a variety of features that work together to enhance your experience, whether you're unwinding, spending time with loved ones, or seeking relief. Every detail is designed to ensure a consistently exceptional experience.

## 1 Premium LED lights

Choose from seven distinct colors (*Red, Green, Purple, Light Blue, Aquamarine, Pink, and Dark Blue*) or a calming loop to set the mood for your warm water experience while enjoying the soft glow of the exterior corner lights to enhance your outdoor space.

## 2 Infinity-Edge water feature

The Infinity-Edge water feature is a beautiful complement to your hydrotherapy routine. Find serenity as you relax in seat just below and experience the caress of cascading water on your back.

## 3 VSHS water care

Crystal clear water is a must for the ultimate hot tub experience. All Viking hot tubs are expertly designed to effectively filter your water and work in conjunction with an ozone mixing chamber to keep your water fresh, clean, and ready to enjoy when you are.

## 4 Everlast spa shell

Feel the difference with our unique spa shell that is designed to be incredibly soft to the touch. The Everlast shell is not only slip-resistant but also exceptionally durable, and it comes with a limited lifetime warranty for your peace of mind. Choose from a range of natural colors that will create a serene and calming atmosphere, providing the perfect backdrop for your daily relaxation and rejuvenation.





# Elite Series

The Elite series of hot tubs is designed to provide the ultimate relaxation and rejuvenation experience. Each model in this series is equipped with a range of premium features that are tailored to enhance your comfort and well-being. With ergonomic seats in varying heights to accommodate any user and adjustable pillows for personalized luxury, these models offer unparalleled comfort. Treat yourself to the luxury and comfort of the Elite series and elevate your relaxation to new heights.





ELITE SERIES

# Heritage

Immerse yourself in the luxurious comfort of our largest lounge hot tub, the Heritage. This meticulously crafted design leaves nothing to chance, delivering powerful hydrotherapy with features like the Volcano floor jet and the targeted neck jets in the spacious captain's chairs. Elevate your outdoor hot tub experience with this thoughtfully designed model for ultimate head-to-toe relaxation and rejuvenation.

**6 ADULTS | LOUNGE**

92" x 92" x 37.5" | 234 cm x 234 cm x 95.25 cm



Heritage II spa shown with White Satin shell and Carbon cabinet



**HERITAGE I**  
51 jets, 2 jet pumps

Heritage I shown with Opal Satin shell, standard control panel and optional music system



**HERITAGE II**  
61 jets, 2 jet pumps

Heritage II shown with White Satin shell and optional touchscreen control panel



ELITE SERIES

# Tradition

Indulge in the ultimate relaxation and rejuvenation experience with our spacious open-seating hot tub, the Tradition. Featuring two versions of the unique three-direction "swing" seat with strategically placed jets, this hot tub offers the option to comfortably lounge across nearby seats or sink into generously jetted captain's chairs. This thoughtfully designed model features strategically placed jets that offer comfortable lounging and targeted therapy for your wrists, neck, and feet. Elevate your outdoor hot tub relaxation experience with the Tradition – designed for ultimate head-to-toe rejuvenation.

**7 ADULTS | NON-LOUNGE**  
92" x 92" x 37.5" | 234 cm x 234 cm x 95.25 cm



Tradition I spa shown with White Satin shell and Slate cabinet with optional Carbon corners

**TRADITION I**  
53 jets, 2 jet pumps



Tradition I spa shown with White Satin shell, standard control panel and optional music system



**TRADITION II**  
63 jets, 2 jet pumps

Tradition II shown with Opal Satin shell and optional touchscreen control panel



ELITE SERIES

Apex

Pamper yourself in the unparalleled relaxation offered by the Apex, a spa that promises a complete head-to-toe rejuvenation experience. Unwind as the strategically positioned jets in each seat work their magic, targeting specific areas of your body to provide a thorough and invigorating hydrotherapy session. Elevate your comfort by adjusting the pillows to your preference or take it a step further by opting for the Air X® jetting option, which delivers a gentle and delicate massage experience. With the Apex, your backyard transforms into a private haven for pure relaxation and indulgence.

6 ADULTS | LOUNGE

86" x 86" x 36" | 218 cm x 218 cm x 91.5 cm



Apex II spa shown with White Satin shell and Slate cabinet



APEX I

35 jets, 1 jet pump

Apex I shown with Opal Satin shell and optional touchscreen control panel



APEX II

50 jets, 2 jet pumps

Apex II shown with White Satin shell, optional touchscreen control panel and optional music system



ELITE SERIES

# Ascent

The open-seated Ascent is thoughtfully designed to provide an unparalleled hot tub experience. Its barrier-free seating not only allows for easy movement between seats but also ensures that every individual can access their preferred spot with ease. The inclusion of two spacious captain's chairs enhances the feeling of luxury and provides ample space for relaxation. Each seat is equipped with custom targeted jetting, allowing for a personalized hydrotherapy experience tailored to individual preferences. Additionally, powerful foot jets contribute to an all-encompassing sense of comfort and rejuvenation, making this outdoor hot tub the epitome of relaxation and well-being.

**7 ADULTS | NON-LOUNGE**

86" x 86" x 36" | 218 cm x 218 cm x 91.5 cm



Ascent II spa shown with Opal Satin shell and Stone cabinet

**ASCENT I**

35 jets, 1 jet pump



Ascent I shown with White Satin shell, optional touchscreen control panel, and optional music system



Ascent II shown with White Satin shell, optional touchscreen control panel, and optional music system

**ASCENT II**

50 jets, 2 jet pumps



# Heirloom Series

The Heirloom series of hot tubs is designed to offer a perfect balance of premium features and affordability. These hot tubs boast a range of high-quality features, including ergonomically designed seating and powerful jets for targeted massage with customizable pressure settings. Whether you're seeking to unwind after a long day, aid in muscle recovery after a workout, or find relief from chronic pain, these hot tubs offer a versatile solution. Available in a variety of sizes and configurations, they can seamlessly integrate into any outdoor space, creating a luxurious and tranquil retreat in your own backyard.





# HEIRLOOM SERIES

## Royale

Get ready to experience luxury like never before with the Royale collection of hot tubs in the Heirloom series. This ideal configuration offers LED lighting and a beautiful cascading Infinity-Edge water feature to help you set the mood for your outdoor hot tub. Complete with a comfortable lounge seat and two spacious captain's chairs, this hot tub allows you to enjoy all the benefits of hydrotherapy.

6 ADULTS | LOUNGE  
78" x 78" x 34" | 198 cm x 198 cm x 86 cm



Royale ETS spa shown with Opal Satin shell, Walnut cabinet and optional music system

ROYALE ETS  
33 jets, 2 jet pumps



Royale ETS spa shown with Opal Satin shell, standard control panel and optional music system

ROYALE  
33 jets, 1 jet pump



Royale spa shown with Silver Satin shell and optional touchscreen control panel

# HEIRLOOM SERIES

## Regal

Discover the luxurious Regal models in the Heirloom series, designed to offer the best in barrier-free outdoor hot tub seating. These hot tubs showcase two of our unique three-direction "swing" seats, offering the ultimate hydromassage experience. Set the perfect mood with LED lighting and a cascading Infinity-Edge water feature. Find the perfect configuration for your outdoor hot tub relaxation needs.

7 ADULTS | NON-LOUNGE  
78" x 78" x 34" | 198 cm x 198 cm x 86 cm



Regal ETS spa shown with Silver Satin shell and Black cabinet

REGAL ETS  
33 jets, 2 jet pumps



Regal ETS spa shown with Silver Satin shell and standard control panel

REGAL  
33 jets, 1 jet pump



Regal spa shown with White Satin shell and standard control panel



HEIRLOOM SERIES

# Aurora 3

The Heirloom series Aurora is a compact yet luxurious three-person hot tub that fits perfectly in small outdoor spaces. Whether you prefer to stretch out in the spacious lounge seat or sink into the captain's chair for targeted relaxation, this hot tub delivers powerful hydrotherapy in a conveniently small package.

3 ADULTS | LOUNGE

60" x 84" x 34" | 152 cm x 213 cm x 86 cm



Aurora 3 spa shown with White Satin shell and Coastal Gray cabinet

**AURORA 3**  
33 jets, 1 jet pump



Aurora 3 spa shown with White Satin shell and standard control panel

HEIRLOOM SERIES

# Viking 3

The Viking round hot tub is a classic and offers ample space to unwind or gather with loved ones. With numerous hydrotherapy jets, every seat in this hot tub ensures a tranquil and rejuvenating experience.

5 ADULTS | NON-LOUNGE

72" round, 35" tall | 183 cm round, 89 cm tall



Viking 3 spa shown with White Satin shell and Taupe cabinet

**VIKING 3**  
20 jets, 1 jet pump



Viking 3 spa shown with White Satin shell and standard control panel



# Plug N' Play Series

The Plug N' Play series offers a selection of hot tubs that are designed for easy setup without the need for extra electrical installation. You can start unwinding, rejuvenating, and spending quality time with your loved ones right out of the box. Every model in this series is equipped with all the essential features, allowing you to begin your relaxation, recovery, and bonding experiences with family and friends immediately. By simply plugging in your hot tub, you can effortlessly create a tranquil environment for all your leisure activities.





PLUG N' PLAY SERIES

# Royale

Get ready to experience luxury like never before with the Royale collection of hot tubs in the Plug N' Play series. This ideal configuration offers LED lighting and a beautiful cascading Infinity-Edge water feature to help you set the mood for your outdoor hot tub. Complete with a comfortable lounge seat and two spacious captain's chairs, this hot tub allows you to enjoy all the benefits of hydrotherapy. Experience true portability with our Plug N' Play series hot tubs, all of which can be easily plugged into any 120v outlet.

**6 ADULTS | LOUNGE**  
78" x 78" x 34" | 198 cm x 198 cm x 86 cm

Royal P+ spa shown with White Satin shell, Black cabinet and optional music system



**ROYALE P+**  
23 jets, 1 jet pump



Royale P+ spa shown with White Satin shell, standard control panel and optional music system

**ROYALE P**  
19 jets, 1 jet pump



Royale P spa shown with Opal Satin shell and standard control panel

PLUG N' PLAY SERIES

# Regal

Discover the deluxe Regal models in the Plug N' Play series, designed to offer the best in barrier-free outdoor hot tub seating. These hot tubs feature our unique three-direction "swing" seats, which provide a variety of options for all your hydrotherapy needs. Set the perfect mood with LED lighting and a cascading Infinity-Edge water feature. Experience true portability with our Plug N' Play series hot tubs, all of which can be easily plugged into any 120v outlet.

**7 ADULTS | NON-LOUNGE**  
78" x 78" x 34" | 198 cm x 198 cm x 86 cm

Regal P spa shown with Opal Satin shell and Barnwood cabinet with optional Black corners



**REGAL P+**  
23 jets, 1 jet pump



Regal P+ spa shown with White Satin shell, standard control panel and optional music system

**REGAL P**  
19 jets, 1 jet pump



Regal P spa shown with Opal Satin shell and standard control panel



PLUG N' PLAY SERIES

Aurora

The Plug N' Play series Aurora is a compact yet comfortable three-person hot tub that fits perfectly in small outdoor spaces. Whether you prefer to stretch out in the spacious lounge seat or sink into the captain's chair for targeted relaxation, this hot tub delivers powerful hydrotherapy in a conveniently small package. Experience true portability with our Plug N' Play series hot tubs, all of which can be easily plugged into any 120v outlet.

3 ADULTS | LOUNGE

60" x 84" x 34" | 152 cm x 213 cm x 86 cm

Aurora P spa shown with Opal Satin shell and Walnut cabinet



AURORA P+

23 jets, 1 jet pump



Aurora P+ spa shown with Silver Satin shell and optional touchscreen control panel

AURORA P

9 jets, 1 jet pump



Aurora P spa shown with Opal Satin shell and standard control panel

PLUG N' PLAY SERIES

Viking 2P

The Viking round hot tub is a classic and offers ample space to unwind or gather with loved ones. With numerous hydrotherapy jets, every seat in this hot tub ensures a tranquil and rejuvenating experience. Experience true portability with our Plug N' Play series hot tubs, all of which can be easily plugged into any 120v outlet.

5 ADULTS | NON-LOUNGE

72" round, 35" tall | 183 cm round, 89 cm tall

Viking 2P spa shown with Opal Satin shell and Walnut cabinet



VIKING 2P

20 jets, 1 jet pump



Viking 2P spa shown with Opal Satin shell and standard control panel



# Essentials and Options

To further enrich your hot tub experience, carefully select from a range of essential options and accessories. Whether it's a durable set of steps for secure entry and exit or advanced automation tools, we can help you perfect every detail.

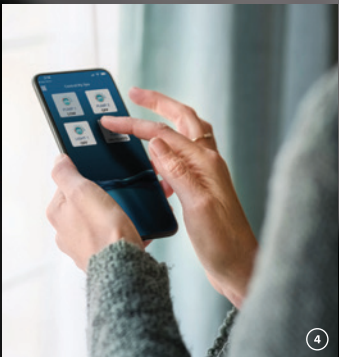


Royale ETS with Viking cover lifter, Premium step in black and music system, shown with Opal Satin shell and Walnut cabinet

- 1 Cover Lifter**  
Ensure your cover stays clean and lasts longer with a Viking cover lifter. Easily remove the cover with just one person.
- 2 Steps**  
Make getting in and out of your hot tub easy and secure. Choose from Premium step (2A) or Standard step (2B) in Black.
- 3 Touchscreen**  
Elevate your spa experience with our state-of-the-art premium touchscreen controls. Effortlessly swipe through a user-friendly interface to activate your jets, adjust the ambiance by changing the color of your lights, and even control the optional entertainment system. Enjoy seamless control and convenience at your fingertips.



- 4 ControlMySpa™**  
With the touch of a button on your phone, you can effortlessly manage every aspect of your hot tub experience. Whether you want to raise the temperature for a cozy soak, illuminate the water with vibrant colors, or select the perfect playlist to enhance your relaxation, it's all at your fingertips.
- 5 Music**  
Elevate your hot tub experience with the perfect soundtrack. Seamlessly connect to the integrated Bluetooth® speakers and enhance every moment with your favorite tunes. The Elite series system includes a subwoofer, delivering a deeper, more immersive sound. Elite Series speaker (5A), Heirloom and Plug N' Play speaker (5B).





# Harmonious Outdoor Space

Your Viking hot tub is more than just a place to relax and unwind – it is a haven for rejuvenation and socializing. As the centerpiece of your outdoor area, choose from a variety of cabinet and shell colors that complement the overall design of your landscape and outdoor gathering spaces.

Every cabinet is crafted from durable, weather-resistant materials that are UV resistant. Available in a variety of colors, choose matching corners for a sophisticated look or, go dramatic with Carbon or Black corners. The Everlast spa shell is slip-resistant, long-lasting, and backed by a limited lifetime warranty. Its soft, comfortable texture makes it a delight to sit in and enjoy for hours on end.



Optional Carbon corners available on Elite models, and Black corners available on Heirloom and Plug n’ Play models.

Image show with Carbon corner on Stone cabinet



Elite Series Apex spa with White Satin Shell, Stone cabinet, and optional Premium step in Black

## Elite Series

Modern and clean styling is the epitome of every Elite Series model.

### Cabinet



Slate

Chestnut

Stone

Carbon

### Everlast spa shell



White Satin

Silver Satin

Opal Satin

## Heirloom and Plug N’ Play Series

Classic lines and rich colors are the heart of the Heirloom and Plug N’ Play series models.

### Cabinet



Coastal Gray

Walnut

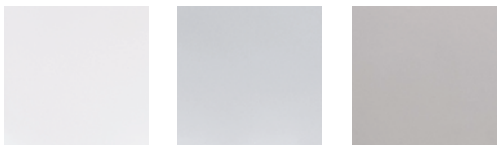
Barnwood

Black

Taupe

Walnut

### Everlast spa shell



White Satin

Silver Satin

Opal Satin

Viking round models only



White Satin

Opal Satin



ELITE SERIES				
Model	Heritage II	Heritage I	Tradition II	Tradition I
Seating Capacity	6 Adults	6 Adults	7 Adults	7 Adults
Lounge/Non-lounge	Lounge	Lounge	Non-lounge	Non-lounge
Dimensions	92" x 92" x 37.5" 234 cm x 234 cm x 95.25cm	92" x 92" x 37.5" 234 cm x 234 cm x 95.25cm	92" x 92" x 37.5" 234 cm x 234 cm x 95.25cm	92" x 92" x 37.5" 234 cm x 234 cm x 95.25cm
Water Capacity	370 gallons   1,400 liters	370 gallons   1,400 liters	430 gallons   1,628 liters	430 gallons   1,628 liters
Dry Weight	650 lbs.   295 kg	650 lbs.   295 kg	700 lbs.   318 kg	700 lbs.   318 kg
Filled Weight¹	3738 lbs.   1693 kg	3738 lbs.   1693 kg	4289 lbs.   1943 kg	4289 lbs.   1943 kg
Total Jets	61	51	63	53
Hydrotherapy Jets	1 Volcano Jet 10 Two-inch directional jets 12 Two-inch multi-port jets 10 Two-inch neck jets 6 Three-inch directional jets 6 Three-inch rotating jets 4 Four-inch directional jets 4 Four-inch rotating jets 3 Five-inch directional jets 2 Two-inch stationary jets	1 Volcano Jet 6 Two-inch directional jets 10 Two-inch multi-port jets 10 Two-inch neck jets 4 Three-inch directional jets 6 Three-inch rotating jets 4 Four-inch directional jets 4 Four-inch rotating jets 3 Five-inch directional jets	1 Volcano Jet 8 Two-inch directional jets 10 Two-inch multi-port jets 8 Two-inch neck jets 8 Three-inch directional jets 8 Three-inch rotating jets 4 Four-inch directional jets 6 Four-inch rotating jets 3 Five-inch directional jets	1 Volcano Jet 4 Two-inch directional jets 10 Two-inch multi-port jets 8 Two-inch neck jets 6 Three-inch directional jets 8 Three-inch rotating jets 4 Four-inch directional jets 6 Four-inch rotating jets 3 Five-inch directional jets
Auxiliary Jets	1 Ozone jet 2 Water feature jets	1 Ozone jet 2 Water feature jets	1 Ozone jet 2 Water feature jets	1 Ozone jet 2 Water feature jets
Lighting System	LED points-of-light, interior and exterior	LED points-of-light, interior and exterior	LED points-of-light, interior and exterior	LED points-of-light, interior and exterior
Water Feature	Infinity Edge	Infinity Edge	Infinity Edge	Infinity Edge
Control System	Balboa TP740 240v/60amp	Balboa TP740 240v/60 amp	Balboa TP740 240v/60 amp	Balboa TP740 240v/60 amp
Heater	5.5kW Heater	5.5kW Heater	5.5kW Heater	5.5kW Heater
Energy Efficiency	2.0 lb. density polyurethane foam; Arctic Insulation; Certified to California Energy Commission (CEC) Standards	2.0 lb. density polyurethane foam; Arctic Insulation; Certified to California Energy Commission (CEC) Standards	2.0 lb. density polyurethane foam; Arctic Insulation; Certified to California Energy Commission (CEC) Standards	2.0 lb. density polyurethane foam; Arctic Insulation; Certified to California Energy Commission (CEC) Standards
Performance Rating	2 jet pumps, VSHS 12	2 jet pumps, VSHS 12	2 jet pumps, VSHS 12	2 jet pumps, VSHS 12
Filter	50 square foot filter	50 square foot filter	50 square foot filter	50 square foot filter
Water Care	Mazzei ozone injection system	Mazzei ozone injection system	Mazzei ozone injection system	Mazzei ozone injection system
Spa Cover	1.5 lbs. density, 4" to 2.5" tapered foam core cover. Weather resistant material   Black	1.5 lbs. density, 4" to 2.5" tapered foam core cover. Weather resistant material   Black	1.5 lbs. density, 4" to 2.5" tapered foam core cover. Weather resistant material   Black	1.5 lbs. density, 4" to 2.5" tapered foam core cover. Weather resistant material   Black
Everlast Spa Shell Color Options	White Satin, Silver Satin or Opal Satin	White Satin, Silver Satin or Opal Satin	White Satin, Silver Satin or Opal Satin	White Satin, Silver Satin or Opal Satin
Cabinet Color Options	Slate, Chestnut, Stone, Carbon	Slate, Chestnut, Stone, Carbon	Slate, Chestnut, Stone, Carbon	Slate, Chestnut, Stone, Carbon
Corner Color Options	Matching or Carbon	Matching or Carbon	Matching or Carbon	Matching or Carbon
Options and Accessories				
Entertainment Systems	Bluetooth® stereo, integrated 3" speakers with subwoofer	Bluetooth® stereo, integrated 3" speakers with subwoofer	Bluetooth® stereo, integrated 3" speakers with subwoofer	Bluetooth® stereo, integrated 3" speakers with subwoofer
Upgraded Controls	SpaTouch™ 4	SpaTouch™ 4	SpaTouch™ 4	SpaTouch™ 4
Remote Access	WiFi Spa Control	WiFi Spa Control	WiFi Spa Control	WiFi Spa Control
Advanced Jetting	Air X® Therapy System	Air X® Therapy System	Air X® Therapy System	Air X® Therapy System
Steps	Premium or Standard   Black	Premium or Standard   Black	Premium or Standard   Black	Premium or Standard   Black
Cover Lifter	Standard Viking Spas lifter	Standard Viking Spas lifter	Standard Viking Spas lifter	Standard Viking Spas lifter

ELITE SERIES				
Model	Apex II	Apex I	Ascent II	Ascent I
Seating Capacity	6 Adults	6 Adults	7 Adults	7 Adults
Lounge/Non-lounge	Lounge	Lounge	Non-lounge	Non-lounge
Dimensions	86" x 86" x 36" 218 cm x 218 cm x 91.5 cm	86" x 86" x 36" 218 cm x 218 cm x 91.5 cm	86" x 86" x 36" 218 cm x 218 cm x 91.5 cm	86" x 86" x 36" 218 cm x 218 cm x 91.5 cm
Water Capacity	325 gallons   1,230 liters	325 gallons   1,230 liters	345 gallons   1,306 liters	345 gallons   1,306 liters
Dry Weight	600 lbs.   273 kg	600 lbs.   273 kg	600 lbs.   273 kg	600 lbs.   273 kg
Filled Weight¹	3,312 lbs.   1,501 kg	3,312 lbs.   1,501 kg	3,479 lbs.   1,576 kg	3,479 lbs.   1,576 kg
Total Jets	50	35	50	35
Hydrotherapy Jets	12 Two-inch directional jets 5 Two-inch multi-port jets 10 Three-inch directional jets 2 Three-inch rotating jets 1 Four-inch directional jets 3 Four-inch rotating jets 2 Five-inch directional jets 12 Two-inch stationary jets	7 Two-inch directional jets 5 Two-inch multi-port jets 8 Three-inch directional jets 2 Three-inch rotating jets 1 Four-inch directional jets 3 Four-inch rotating jets 2 Five-inch directional jets 4 Two-inch stationary jets	12 Two-inch directional jets 7 Two-inch multi-port jets 9 Three-inch directional jets 2 Three-inch rotating jets 1 Four-inch directional jets 2 Four-inch rotating jets 4 Five-inch directional jets 10 Two-inch stationary jets	7 Two-inch directional jets 5 Two-inch multi-port jets 7 Three-inch directional jets 2 Three-inch rotating jets 1 Four-inch directional jets 2 Four-inch rotating jets 4 Five-inch directional jets 4 Two-inch stationary jets
Auxiliary Jets	1 Ozone jet 2 Water feature jets	1 Ozone jet 2 Water feature jets	1 Ozone jet 2 Water feature jets	1 Ozone jet 2 Water feature jets
Lighting System	LED points-of-light, interior and exterior	LED points-of-light, interior and exterior	LED points-of-light, interior and exterior	LED points-of-light, interior and exterior
Water Feature	Infinity Edge	Infinity Edge	Infinity Edge	Infinity Edge
Control System	Balboa TP740 240v/60amp	Balboa TP740 240v/50amp	Balboa TP740 240v/60amp	Balboa TP740 240v/50amp
Heater	5.5kW Heater	5.5kW Heater	5.5kW Heater	5.5kW Heater
Energy Efficiency	2.0 lb. density polyurethane foam; Arctic Insulation; Certified to California Energy Commission (CEC) Standards	2.0 lb. density polyurethane foam; Arctic Insulation; Certified to California Energy Commission (CEC) Standards	2.0 lb. density polyurethane foam; Arctic Insulation; Certified to California Energy Commission (CEC) Standards	2.0 lb. density polyurethane foam; Arctic Insulation; Certified to California Energy Commission (CEC) Standards
Performance Rating	2 jet pumps, VSHS 10	1 jet pump, VSHS 5	2 jet pumps, VSHS 10	1 jet pump, VSHS 5
Filter	50 square foot filter	50 square foot filter	50 square foot filter	50 square foot filter
Water Care	Mazzei ozone injection system	Mazzei ozone injection system	Mazzei ozone injection system	Mazzei ozone injection system
Spa Cover	1.5 lbs. density, 4" to 2.5" tapered foam core cover. Weather resistant material   Black	1.5 lbs. density, 4" to 2.5" tapered foam core cover. Weather resistant material   Black	1.5 lbs. density, 4" to 2.5" tapered foam core cover. Weather resistant material   Black	1.5 lbs. density, 4" to 2.5" tapered foam core cover. Weather resistant material   Black
Everlast Spa Shell Color Options	White Satin, Silver Satin or Opal Satin	White Satin, Silver Satin or Opal Satin	White Satin, Silver Satin or Opal Satin	White Satin, Silver Satin or Opal Satin
Cabinet Color Options	Slate, Chestnut, Stone, Carbon	Slate, Chestnut, Stone, Carbon	Slate, Chestnut, Stone, Carbon	Slate, Chestnut, Stone, Carbon
Corner Color Options	Matching or Carbon	Matching or Carbon	Matching or Carbon	Matching or Carbon
Options and Accessories				
Entertainment Systems	Bluetooth® stereo, integrated 3" speakers with subwoofer	Bluetooth® stereo, integrated 3" speakers with subwoofer	Bluetooth® stereo, integrated 3" speakers with subwoofer	Bluetooth® stereo, integrated 3" speakers with subwoofer
Upgraded Controls	SpaTouch™ 4	SpaTouch™ 4	SpaTouch™ 4	TouchScreen4 controls
Remote Access	WiFi Spa Control	WiFi Spa Control	WiFi Spa Control	WiFi Spa Control
Advanced Jetting	Air X® Therapy System		Air X® Therapy System	
Steps	Premium or Standard   Black	Premium or Standard   Black	Premium or Standard   Black	Premium or Standard   Black
Cover Lifter	Standard Viking Spas lifter	Standard Viking Spas lifter	Standard Viking Spas lifter	Standard Viking Spas lifter

<sup>1</sup> includes weight of water plus dry weight of spa



HEIRLOOM SERIES						
Model	Regal ETS	Regal	Royale ETS	Royale	Aurora 3	Viking 3
Seating Capacity	7 Adults	7 Adults	6 Adults	6 Adults	3 Adults	5 Adults
Lounge/Non-lounge	Non-lounge	Non-lounge	Lounge	Lounge	Lounge	Non-lounge
Dimensions	78" x 78" x 34" 198 cm x 198 cm x 86 cm	78" x 78" x 34" 198 cm x 198 cm x 86 cm	78" x 78" x 34" 198 cm x 198 cm x 86 cm	78" x 78" x 34" 198 cm x 198 cm x 86 cm	60" x 84" x 34" 152 cm x 213 cm x 86 cm	72 Round, 35" Tall 183 cm round, 89 cm tall
Water Capacity	290 gallons   1,098 liters	290 gallons   1,098 liters	270 gallons   1,022 liters	270 gallons   1,022 liters	210 gallons   795 liters	250 gallons   950 liters
Dry Weight	495 lbs.   225 kg	495 lbs.   225 kg	495 lbs.   225 kg	495 lbs.   225 kg	395 lbs.   179 kg	330 lbs   150 kg
Filled Weight¹	2915 lbs.   1320 kg	2915 lbs.   1320 kg	2748 lbs.   1245 kg	2748 lbs.   1245 kg	2148 lbs.   973 kg	2416 lbs.   1094 kg
Total Jets	33	33	33	33	33	20
Hydrotherapy Jets	5 Two-inch directional jets 3 Two-inch multi-port jets 4 Two-inch neck jets 9 Three-inch directional jets 5 Three-inch rotating jets 2 Four-inch directional jets 2 Four-inch rotating jets	5 Two-inch directional jets 3 Two-inch multi-port jets 4 Two-inch neck jets 9 Three-inch directional jets 5 Three-inch rotating jets 2 Four-inch directional jets 2 Four-inch rotating jets	7 Two-inch directional jets 8 Two-inch multi-port jets 2 Two-inch neck jets 5 Three-inch directional jets 4 Three-inch rotating jets 2 Four-inch directional jets 2 Four-inch rotating jets	7 Two-inch directional jets 8 Two-inch multi-port jets 2 Two-inch neck jets 5 Three-inch directional jets 4 Three-inch rotating jets 2 Four-inch directional jets 2 Four-inch rotating jets	8 Two-inch directional jets 4 Two-inch multi-port jets 2 Two-inch neck jets 2 Three-inch directional jets 2 Three-inch rotating jets 2 Four-inch directional jets 4 Four-inch rotating jets 6 Two-inch stationary jets	1 Whirlpool Jet 4 Three-inch directional jets 2 Three-inch rotating jets 2 Four-inch directional jets 2 Four-inch rotating jets 8 Two-inch stationary jets
Auxiliary Jets	1 Ozone jet 2 Water feature jets	1 Ozone jet 2 Water feature jets	1 Ozone jet 2 Water feature jets	1 Ozone jet 2 Water feature jets	1 Ozone jet 2 Water feature jets	1 Ozone jet
Lighting System	LED points-of-light, interior and exterior	LED points-of-light, interior and exterior	LED points-of-light, interior and exterior	LED points-of-light, interior and exterior	LED points-of-light, interior and exterior	LED points-of-light
Water Feature	Infinity Edge	Infinity Edge	Infinity Edge	Infinity Edge	Infinity Edge	N/A
Control System	Balboa TP500 240v/60 amp	Balboa TP500 240v/50 amp	Balboa TP500 240v/60 amp	Balboa TP500 240v/50 amp	Balboa TP500 240v/50 amp	Balboa TP500 240v/50 amp
Heater	5.5kW Heater	5.5kW Heater	5.5kW Heater	5.5kW Heater	5.5kW Heater	5.5kW Heater
Energy Efficiency	2.0 lb. density polyurethane foam; Arctic Insulation; Certified to California Energy Commission (CEC) Standards	2.0 lb. density polyurethane foam; Arctic Insulation; Certified to California Energy Commission (CEC) Standards	2.0 lb. density polyurethane foam; Arctic Insulation; Certified to California Energy Commission (CEC) Standards	2.0 lb. density polyurethane foam; Arctic Insulation; Certified to California Energy Commission (CEC) Standards	2.0 lb. density polyurethane foam; Arctic Insulation; Certified to California Energy Commission (CEC) Standards	2.0 lb. density polyurethane foam; Arctic Insulation; Certified to California Energy Commission (CEC) Standards
Performance Rating	2 jet pumps, VSHS 6	1 jet pump, VSHS 4	2 jet pumps, VSHS 6	1 jet pump, VSHS 4	1 jet pump, VSHS 4	1 jet pump, VSHS 4
Filter	50 square foot filter	50 square foot filter	50 square foot filter	50 square foot filter	50 square foot filter	20 square foot filter
Water Care	Mazzei ozone injection system	Mazzei ozone injection system	Mazzei ozone injection system	Mazzei ozone injection system	Mazzei ozone injection system	Mazzei ozone injection system
Spa Cover	1.5 lbs. density, 4" to 2.5" tapered foam core cover. Weather resistant material   Black	1.5 lbs. density, 4" to 2.5" tapered foam core cover. Weather resistant material   Black	1.5 lbs. density, 4" to 2.5" tapered foam core cover. Weather resistant material   Black	1.5 lbs. density, 4" to 2.5" tapered foam core cover. Weather resistant material   Black	1.5 lbs. density, 4" to 2.5" tapered foam core cover. Weather resistant material   Black	1.5 lbs. density, 4" to 2.5" tapered foam core cover. Weather resistant material   Black
Everlast Spa Shell Color Options	White Satin, Silver Satin or Opal Satin	White Satin, Silver Satin or Opal Satin	White Satin, Silver Satin or Opal Satin	White Satin, Silver Satin or Opal Satin	White Satin, Silver Satin or Opal Satin	White Satin or Opal Satin
Cabinet Color Options	Coastal Gray, Walnut, Barnwood or Black	Coastal Gray, Walnut, Barnwood or Black	Coastal Gray, Walnut, Barnwood or Black	Coastal Gray, Walnut, Barnwood or Black	Coastal Gray, Walnut, Barnwood or Black	Taupe or Walnut
Corner Color Options	Matching or Black	Matching or Black	Matching or Black	Matching or Black	Matching or Black	NA
Options and Accessories						
Entertainment Systems	Bluetooth® stereo and integrated 5" speakers	Bluetooth® stereo and integrated 5" speakers	Bluetooth® stereo and integrated 5" speakers	Bluetooth® stereo and integrated 5" speakers		
Upgraded Controls	SpaTouch™ 4	SpaTouch™ 4	SpaTouch™ 4	SpaTouch™ 4	SpaTouch™ 4	
Remote Access	WiFi Spa Control	WiFi Spa Control	WiFi Spa Control	WiFi Spa Control	WiFi Spa Control	WiFi Spa Control
Advanced Jetting	Air X™ Therapy System		Air X™ Therapy System			
Steps	Premium or Standard   Black	Premium or Standard   Black	Premium or Standard   Black	Premium or Standard   Black	Premium or Standard   Black	Standard Black
Cover Lifter	Standard Viking Spas lifter	Standard Viking Spas lifter	Standard Viking Spas lifter	Standard Viking Spas lifter	Standard Viking Spas lifter	

PLUG N' PLAY SERIES						
Regal P+	Regal P	Royale P+	Royale P	Aurora P+	Aurora P	Viking 2P
7 Adults	7 Adults	6 Adults	6 Adults	3 Adults	3 Adults	5 Adults
Non-lounge	Non-lounge	Lounge	Lounge	Lounge	Lounge	Non-lounge
78" x 78" x 34" 198 cm x 198 cm x 86 cm	78" x 78" x 34" 198 cm x 198 cm x 86 cm	78" x 78" x 34" 198 cm x 198 cm x 86 cm	78" x 78" x 34" 198 cm x 198 cm x 86 cm	60" x 84" x 34" 152 cm x 213 cm x 86 cm	60" x 84" x 34" 152 cm x 213 cm x 86 cm	72 Round, 35" Tall 183 cm round, 89 cm tall
290 gallons   1,098 liters	290 gallons   1,098 liters	270 gallons   1,022 liters	270 gallons   1,022 liters	210 gallons   795 liters	210 gallons   795 liters	250 gallons   946 liters
495 lbs   225 kg	495 lbs   225 kg	495 lbs   225 kg	495 lbs   225 kg	395 lbs   179 kg	395 lbs   179 kg	300 lbs   136 kg
2915 lbs.   1320 kg	2915 lbs.   1320 kg	2748 lbs.   1245 kg	2748 lbs.   1245 kg	2148 lbs.   973 kg	2148 lbs.   973 kg	2386 lbs.   1081 kg
23	19	23	19	23	19	20
2 Two-inch directional jets 2 Two-inch multi-port jets 2 Two-inch neck jets 6 Three-inch directional jets 3 Three-inch rotating jets 2 Four-inch directional jets 2 Four-inch rotating jets	4 Two-inch directional jets 8 Three-inch directional jets 4 Four-inch directional jets	4 Two-inch directional jets 4 Two-inch multi-port jets 2 Two-inch neck jets 3 Three-inch directional jets 3 Three-inch rotating jets 2 Four-inch directional jets 2 Four-inch rotating jets	6 Two-inch directional jets 6 Three-inch directional jets 4 Four-inch directional jets	2 Two-inch directional jets 2 Two-inch multi-port jets 2 Three-inch neck jets 4 Three-inch directional jets 3 Three-inch rotating jets 2 Four-inch directional jets 1 Four-inch rotating jets 4 Two-inch stationary jets	2 Two-inch directional jets 2 Two-inch neck jets 7 Three-inch directional jets 3 Four-inch directional jets 2 Two-inch stationary jets	1 Whirlpool Jet 4 Three-inch directional jets 2 Three-inch rotating jets 2 Four-inch directional jets 2 Four-inch rotating jets 8 Two-inch stationary jets
1 Ozone jet 2 Water feature jets	1 Ozone jet 2 Water feature jets	1 Ozone jet 2 Water feature jets	1 Ozone jet 2 Water feature jets	1 Ozone jet 2 Water feature jets	1 Ozone jet 2 Water feature jets	1 Ozone jet
LED points-of light, interior and exterior	LED Lighting System, Spa Light	LED points-of light, interior and exterior	LED Lighting System, Spa Light	LED points-of light, interior and exterior	LED Lighting System, Spa Light	LED Lighting System, Spa Light
Infinity Edge	Infinity Edge	Infinity Edge	Infinity Edge	Infinity Edge	Infinity Edge	N/A
Balboa TP500 120v/15amp ²	Balboa TP500 120v/15amp ²	Balboa TP500 120v/15amp ²	Balboa TP500 120v/15amp ²	Balboa TP500 120v/15amp ²	Balboa TP500 120v/15amp ²	Balboa TP500 120v/15amp ²
1kW Heater ²	1kW Heater ²	1kW Heater ²	1kW Heater ²	1kW Heater ²	1kW Heater ²	1kW Heater ²
2.0 lb. density polyurethane foam; Arctic Insulation; Certified to California Energy Commission (CEC) Standards	2.0 lb. density polyurethane foam; Arctic Insulation; Certified to California Energy Commission (CEC) Standards	2.0 lb. density polyurethane foam; Arctic Insulation; Certified to California Energy Commission (CEC) Standards	2.0 lb. density polyurethane foam; Arctic Insulation; Certified to California Energy Commission (CEC) Standards	2.0 lb. density polyurethane foam; Arctic Insulation; Certified to California Energy Commission (CEC) Standards	2.0 lb. density polyurethane foam; Arctic Insulation; Certified to California Energy Commission (CEC) Standards	2.0 lb. density polyurethane foam; Arctic Insulation; Certified to California Energy Commission (CEC) Standards
1 jet pump, VSHS 2	1 jet pump, VSHS 1	1 jet pump, VSHS 2	1 jet pump, VSHS 2	1 jet pump, VSHS 2	1 jet pump, VSHS 1	1 jet pump, VSHS 2
50 square foot filter	50 square foot filter	50 square foot filter	50 square foot filter	50 square foot filter	50 square foot filter	20 square foot filter
optional	optional	optional	optional	optional	optional	optional
1.5 lbs. density, 4" to 2.5" tapered foam core cover. Weather resistant material   Black	1.5 lbs. density, 4" to 2.5" tapered foam core cover. Weather resistant material   Black	1.5 lbs. density, 4" to 2.5" tapered foam core cover. Weather resistant material   Black	1.5 lbs. density, 4" to 2.5" tapered foam core cover. Weather resistant material   Black	1.5 lbs. density, 4" to 2.5" tapered foam core cover. Weather resistant material   Black	1.5 lbs. density, 4" to 2.5" tapered foam core cover. Weather resistant material   Black	1.5 lbs. density, 4" to 2.5" tapered foam core cover. Weather resistant material   Black
White Satin, Silver Satin or Opal Satin	White Satin, Silver Satin or Opal Satin	White Satin, Silver Satin or Opal Satin	White Satin, Silver Satin or Opal Satin	White Satin, Silver Satin or Opal Satin	White Satin, Silver Satin or Opal Satin	White Satin or Opal Satin
Coastal Gray, Walnut, Barnwood or Black	Coastal Gray, Walnut, Barnwood or Black	Coastal Gray, Walnut, Barnwood or Black	Coastal Gray, Walnut, Barnwood or Black	Coastal Gray, Walnut, Barnwood or Black	Coastal Gray, Walnut, Barnwood or Black	Taupe or Walnut
Matching or Black	Matching or Black	Matching or Black	Matching or Black	Matching or Black	Matching or Black	NA
Bluetooth® stereo and integrated 5" speakers	Bluetooth® stereo and integrated 5" speakers	Bluetooth® stereo and integrated 5" speakers	Bluetooth® stereo and integrated 5" speakers			
SpaTouch™ 4	SpaTouch™ 4	SpaTouch™ 4	SpaTouch™ 4	SpaTouch™ 4	SpaTouch™ 4	
WiFi Spa Control	WiFi Spa Control	WiFi Spa Control	WiFi Spa Control	WiFi Spa Control	WiFi Spa Control	WiFi Spa Control
Premium or Standard   Black	Premium or Standard   Black	Premium or Standard   Black	Premium or Standard   Black	Premium or Standard   Black	Premium or Standard   Black	Standard Black
Standard Viking Spas lifter	Standard Viking Spas lifter	Standard Viking Spas lifter	Standard Viking Spas lifter	Standard Viking Spas lifter	Standard Viking Spas lifter	

¹includes weight of water plus dry weight of spa. ² convertible to 240v/50amp with 4kW heater



# Limited Warranty

We believe in the quality and durability of our products, which is why we stand behind them with a comprehensive warranty. Our commitment to your satisfaction means you can purchase with confidence, knowing that we've got you covered. Visit our website at [www.vikingspas.com](http://www.vikingspas.com) to explore the details of our warranty and discover the peace-of-mind that comes with every product.

- Limited lifetime Everlast spa shell warranty
- 5-year limited spa cabinet warranty
- 3-year limited spa component and spa cover warranty
- 1-year limited ozone, LED light and audio system warranty



Please visit [www.vikingspas.com](http://www.vikingspas.com) or scan the QR code for full and complete warranty details, limitations and exclusions. The warranty information shown above is for Elite and Heirloom series models only, for the Plug N' Play series warranty, visit [www.vikingspas.com](http://www.vikingspas.com) or scan the QR code.

# Dealer Partners

Relationships are vital to us, and our network of independent dealers consists of some of the largest and finest retailers in the world. Like us, they are committed to delivering exceptional customer service and top-quality products.

To find an authorized Viking Spas dealer near you visit [www.vikingspas.com](http://www.vikingspas.com) and click on Find A Dealer.



**FAMILY OWNED  
AMERICAN BUILT**

In a world of mass production, we focus on the values that matter. Our products, crafted with care and rooted in family ownership, reflect a commitment to excellence passed down through the years.

When you choose us, you're not just supporting a business; you're investing in a legacy. You're helping to sustain local economies, nurture communities, and uphold the craftsmanship that makes American products truly special.

Family-Owned, American-Built: where tradition meets quality.